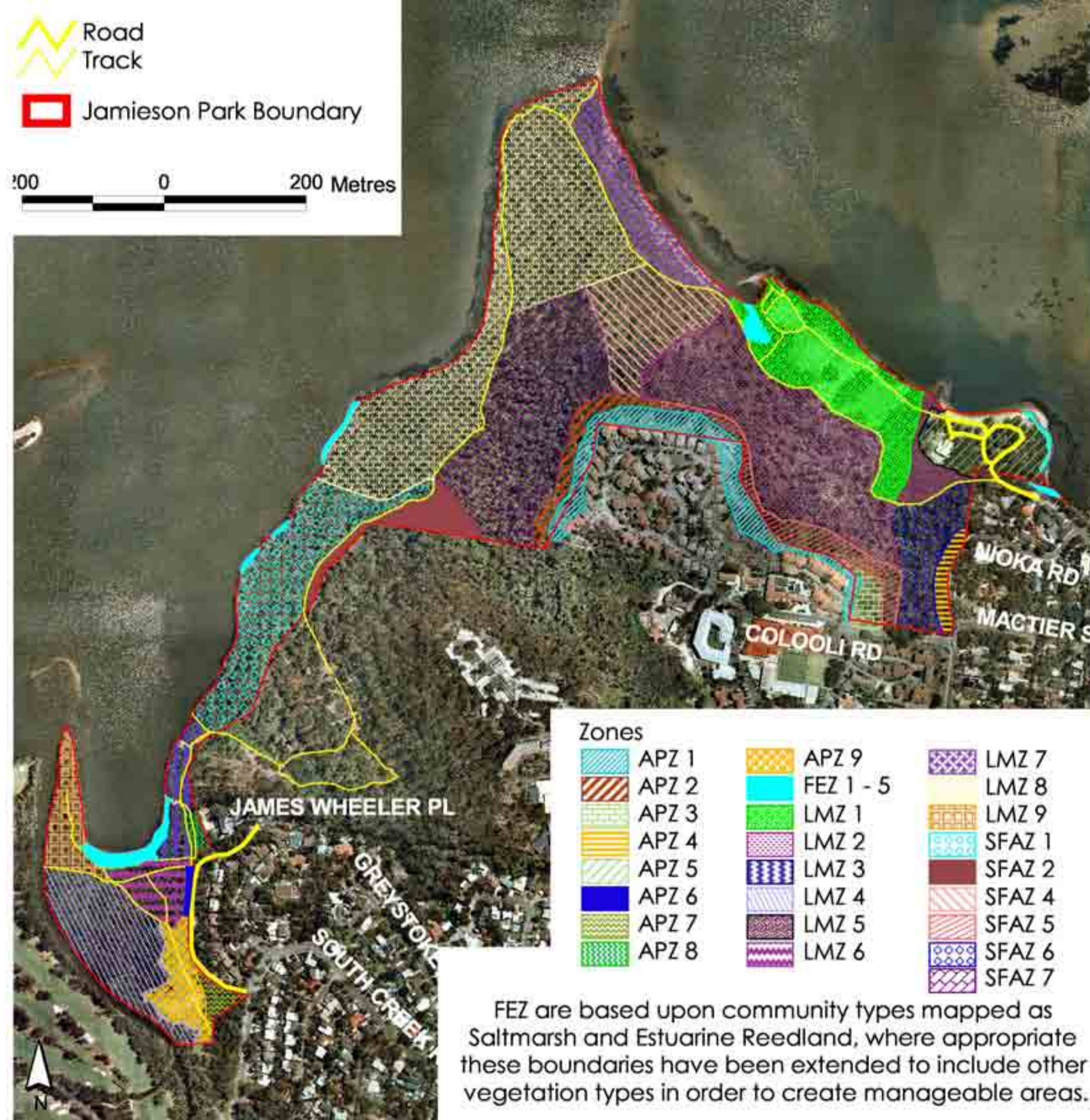


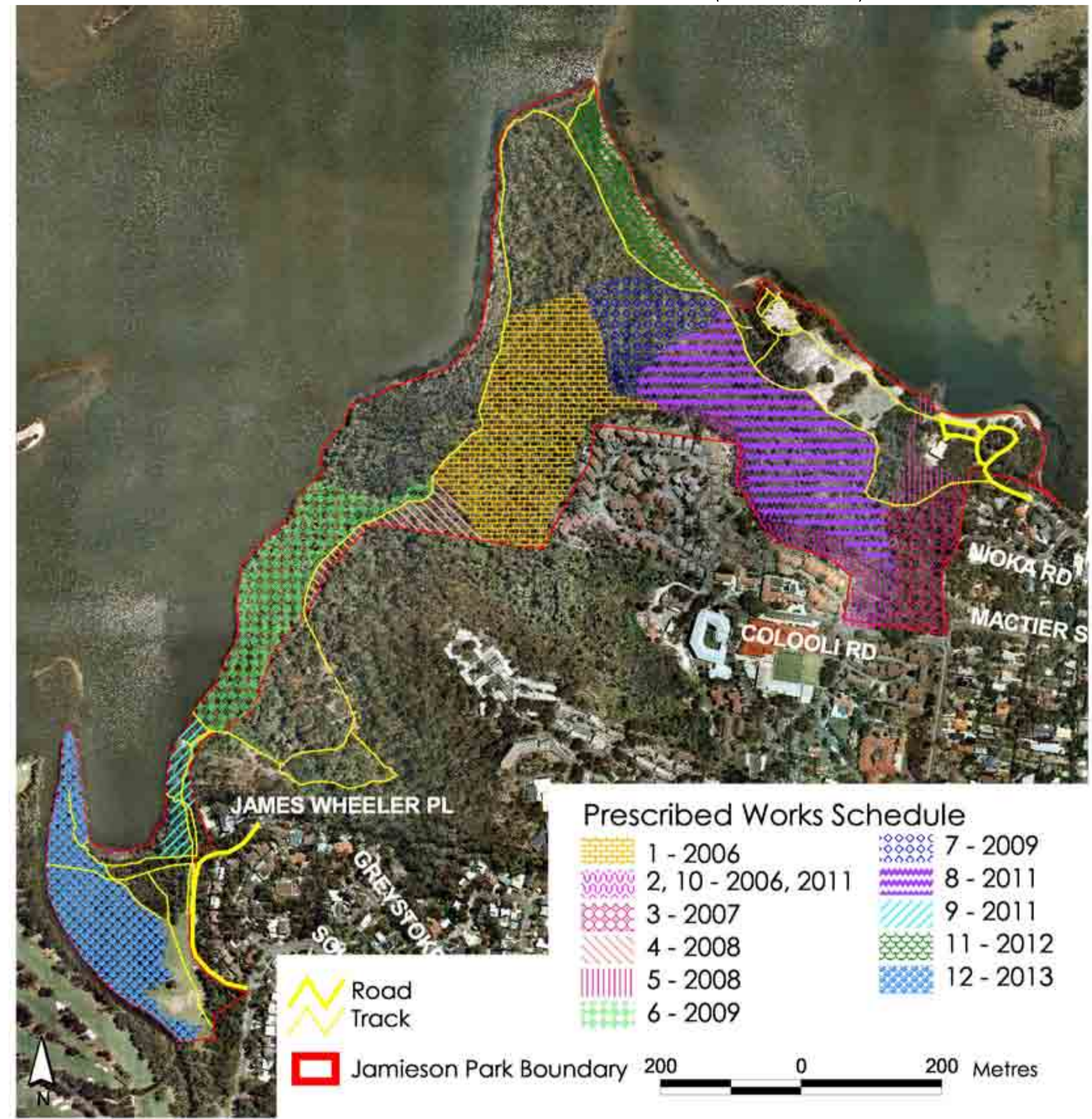
Location



FEZ are based upon community types mapped as Saltmarsh and Estuarine Reedland, where appropriate these boundaries have been extended to include other vegetation types in order to create manageable areas.

Vegetation

Recorded Fire History (as at June 2005)



\* Year of burn may vary due to weather and environmental conditions and resource availability

Operational Schedule

Life of Plan from 2006 - 2016

Prescribed Fire Management Zone

Prescribed Works Schedule

Name	Zone Type	Treatment	Management	HR Treatment Priority*	HR Treatment Year	Assets	Threatened Species and Endangered Ecological Communities*	Aboriginal or Cultural Sites	Land Tenure	Zone Widths
APZ 1	APZ - IPA	Slashing to meet prescription	Management with adjacent land holder is required	-	Subject to Council's FMAZ program priorities*	-	-	-	Crown Land CCM Warringah Council, RSL War Veterans Retirement Village	Applied to logical boundary. Width varies from 6m to 32m. Total average IPA / OPA / SFAZ width of 40m along the western to northern eastern edge. Total average IPA, OPA and SFAZ width 70m within the eastern edge
APZ 2	APZ - OPA	Initial weed removal and long term weed suppression, hand removal of fuels within areas of build up. Treatment to be undertaken for Priority 2 - Manual	Management with adjacent land holder is required	1	2006	-	-	-	Crown Land CCM Warringah Council, RSL War Veterans Retirement Village	Width varies from 11m to 25m. Total average IPA and OPA width - 40m
APZ 3	APZ - OPA	Initial weed removal and long term weed suppression, hand removal of fuels within areas of build up. Treatment to be undertaken for Priority 2 & 10 - Manual	Management with adjacent land holder is required	2, 10	2006, 2011	-	-	-	Crown Land CCM Warringah Council, RSL War Veterans Retirement Village	Applied to logical boundary. Width varies from 2m to 45m. Total average IPA, OPA and SFAZ width 70m within the eastern edge
APZ 4	APZ	Initial weed removal and long term weed suppression, hand removal of fuels within areas of build up. Treatment to be undertaken for Priority 3 - Burning	Management with adjacent land holder is required	3	2007	-	-	-	Crown Land CCM Warringah Council	20m
APZ 5	APZ	Slashing to meet prescription	Management with adjacent land holder is required	-	Subject to Council's FMAZ program priorities*	Road, tracks, car park, sailing club	Estuarine Complex - Swamp Oak Forest	-	Crown Land CCM Warringah Council	Applied to appropriate boundaries
APZ 6	APZ	Initial weed removal and long term weed suppression, hand removal of fuels within areas of build up	-	-	Subject to Council's FMAZ program priorities*	-	-	-	Crown Land CCM Warringah Council	Applied to logical boundary. Width varied from 7 - 11m. Based on 35m from built assets
APZ 7	APZ	Initial weed removal and long term weed suppression, hand removal of fuels within areas of build up	-	-	Subject to Council's FMAZ program priorities*	-	-	-	Crown Land CCM Warringah Council	Applied to appropriate boundaries
APZ 8	APZ	Initial weed removal and long term weed suppression, hand removal of fuels within areas of build up	Management with adjacent land holder is required	-	Subject to Council's FMAZ program priorities*	Tracks	-	-	Crown Land CCM Warringah Council	Applied to logical boundary. Width varied from 6 - 23m. Based on 40m from built assets
APZ 9	APZ	Slashing to meet prescription	-	-	Subject to Council's FMAZ program priorities*	Tracks	Estuarine Complex - Swamp Oak Forest	-	Crown Land CCM Warringah Council	Applied to appropriate boundaries
FEZ 1	FEZ	Exclude fire/quick suppression	-	-	-	Tracks	Estuarine Complex - Swamp Oak Forest; Swamp sclerophyll forest - Estuarine Reedland	-	Crown Land CCM Warringah Council	-
FEZ 2	FEZ	Exclude fire/quick suppression	-	-	-	-	Estuarine Complex - Swamp Oak Forest; Swamp sclerophyll forest - Estuarine Reedland	-	Crown Land CCM Warringah Council	-
FEZ 3	FEZ	Exclude fire/quick suppression	-	-	-	Tracks	Estuarine Complex - Swamp Oak Forest; Swamp sclerophyll forest - Estuarine Reedland	-	Crown Land CCM Warringah Council	-
FEZ 4	FEZ	Exclude fire/quick suppression	-	-	-	-	Coastal saltmarsh - Saltmarsh	-	Crown Land CCM Warringah Council	-
FEZ 5	FEZ	Exclude fire/quick suppression	-	-	-	-	Coastal saltmarsh - Saltmarsh	-	Crown Land CCM Warringah Council	-
LMZ 1	LMZ	-	-	-	-	Tracks	Estuarine Complex - Swamp Oak Forest;	-	Crown Land CCM Warringah Council	-
LMZ 2	LMZ	Burning	-	8	2011	Tracks	Estuarine Complex - Swamp Oak Forest;	-	Crown Land CCM Warringah Council	-
LMZ 3	LMZ	Burning	Management with adjacent land holder is required	9	2011	Tracks	Estuarine Complex - Swamp Oak Forest; Swamp sclerophyll forest - Estuarine Reedland & Swamp Mahogany Forest	-	Crown Land CCM Warringah Council	-
LMZ 4	LMZ	Burning	-	12	2013	Tracks	Estuarine Complex - Swamp Oak Forest; Swamp sclerophyll forest - Swamp Mahogany Forest	Rock engraving	Crown Land CCM Warringah Council	-
LMZ 5	LMZ	Burning	-	5	2008	Tracks	Estuarine Complex - Swamp Oak Forest; Swamp sclerophyll forest - Bangalay Alluvial Forest	-	Crown Land CCM Warringah Council	-
LMZ 6	LMZ	-	-	-	-	Tracks	Estuarine Complex - Swamp Oak Forest; Swamp sclerophyll forest - Swamp Mahogany Forest	-	Crown Land CCM Warringah Council	-
LMZ 7	LMZ	Burning	-	11	2012	Tracks	Estuarine Complex - Swamp Oak Forest	-	Crown Land CCM Warringah Council	-
LMZ 8	LMZ	-	-	-	-	Tracks	Estuarine Complex - Swamp Oak Forest; Swamp sclerophyll forest - Estuarine Reedland	-	Crown Land CCM Warringah Council	-
LMZ 9	LMZ	Burning	-	12	2013	Tracks	Estuarine Complex - Swamp Oak Forest; Swamp sclerophyll forest - Swamp Mahogany Forest	-	Crown Land CCM Warringah Council	-
SFAZ 1	SFAZ	Burning	Management with adjacent land holder is required	6	2009	Tracks	Estuarine Complex - Swamp Oak Forest; Swamp sclerophyll forest - Bangalay Alluvial Forest	-	Crown Land CCM Warringah Council	-
SFAZ 2	SFAZ	Burning	Management with adjacent land holder is required	4	2008	Tracks	Swamp sclerophyll forest - Palm Woodland; Swamp sclerophyll forest - Swamp Mahogany Forest & Bangalay Alluvial Forest	-	Crown Land CCM Warringah Council	-
SFAZ 4	SFAZ	Burning	-	7	2009	Tracks	Estuarine Complex - Swamp Oak Forest	-	Crown Land CCM Warringah Council	-
SFAZ 5	SFAZ	Treatment to be undertaken for Priority 2 - Manual & Priority 10 - Burning	Management with adjacent land holder is required	2, 10	2006, 2011	-	-	-	Crown Land CCM Warringah Council	40m
SFAZ 6	SFAZ	Burning	Management with adjacent land holder is required	3	2007	Tracks	Estuarine Complex - Swamp Oak Forest; Swamp sclerophyll forest - Bangalay Alluvial Forest	-	Crown Land CCM Warringah Council	-
SFAZ 7	SFAZ	Burning	Management with adjacent land holder is required	1	2006	Tracks	Estuarine Complex - Swamp Oak Forest; Swamp sclerophyll forest - Palm Woodland	-	Crown Land CCM Warringah Council	-

\* Recorded fauna within 10km:

- 41 Threatened species
- 46 national, regional or locally significant species

\* Recorded flora within 5km:

- 7 Threatened species
- 21 national, regional or locally significant species

\* No significant species recorded in Park

- Three items of Aboriginal cultural heritage occur adjacent to the park and should not be affected by this plan

\* See Jamieson Park Fire Regime Management Plan Appendix 2 & 3 (ELA 2005) for Threatened and Significant species lists

\* Fire Management Access Zone (FMAZ) priorities dependent on available funds

Explanation of Zones

Asset Protection Zones (APZ)

- Area surrounding a development and managed to reduce the bushfire hazard
- Often has Inner Protection Area (IPA) and Outer Protection Area (OPA)
- APZ widths and fuel reduction treatment will be determined by slope and existing nature of assets

Reduction techniques will include:

- raking and staking
- bush regeneration, involving initial weed removal and long term weed management. This method should be combined with hand removal of ground fuels and manual removal of shrub and middle storey layers
- burning

Aims

- To protect human life and property
- To protect highly valued asset

Prescriptions

- APZ areas may be burnt as appropriate dependent on management issues

IPA:

- To maintain minimum ground fuel loads by raking and staking to less than 40cm in height, with discontinuous shrub and canopy layers. Reduction techniques will include:

- removal/suppression of weeds
- trimming of regrowth
- hand removal
- raking and staking

- Trees should not over-hang buildings

OPA:

- To maintain reduced ground fuel loads and maintain understorey to less than 50cm in height. Reduction techniques will include:

- removal/suppression of weeds
- trimming of regrowth
- hand removal
- raking and staking

Land Management Zone (LMZ)

- Broader areas of the landscape, incorporating those areas not satisfying the criteria for inclusion in Strategic Fire Management Zones or Asset Protection zones
- Reduction techniques will include:

- burning
- weed control

Aims

- Protection of natural and cultural heritage values
- Maintenance of ecological processes

Prescription

- Fire management to meet conservation objectives for species, habitats, populations and cultural heritage values, including:

- to control breaches in minimum fire thresholds and address maintenance of fire age (vegetation age) mosaic, including maximum fire thresholds
- implementation of cultural heritage and threatened species management within areas where cultural heritage and threatened species sites are known or likely to occur

Strategic Fire Advantage Zones (SFAZ)

- Usually adjacent to and complementing asset protection zones
- Managed to protect community assets and ecological sustainability
- Reduction techniques will include:

- burning
- manual fuel reduction, such as raking, slashing, hand removal of ground fuels and manual removal of shrub and canopy layers. Focusing on weed species where appropriate
- weed control

Aims

- To restrict fire movement into and out of reserves
- Reduce the speed and intensity of fire
- Reduce the potential for spot fire development

Prescription

- A general prescription for maximum fine fuel loading within a range of 8 - 18 tonnes per hectare
- To be managed consistent with these applications:
- to provide fuel reduced areas which enable the protection of assets by fire fighters when Asset Protection Zones are not in place
- to complement Asset Protection Zones where insufficient protection is provided
- to provide fuel reduced zones in areas of high ignition potential (eg along roads, rail lines, power lines etc) to slow the development of fires, reduce their spread, and provide for safe suppression
- to provide strategically located fuel reduced areas to reduce the vulnerability of assets which are susceptible to fire
- to attain a fire regime consistent with the requirements for the preservation of biodiversity within vegetation communities

Fire Exclusion Zones (FEZ)

- Areas containing fire intolerant species and assets
- Aims
- To exclude fires (both wildfires and hazard reduction burning) due to the presence of fire intolerant assets, including:
- fire intolerant vegetation communities
- riparian buffers
- cultural/historic sites

Prescription

- Exclude fire and undertake rapid suppression of unplanned fires to maintain fire intolerant species and assets

References:  
Eco Logical Australia (ELA) (2004). Jamieson Park Fire Regime Management Plan. Unpublished report for Warringah Council.  
P & J Smith Ecological Consultants (1995). Vegetation Survey of Jamieson Park and Surrounding Bushland. Unpublished report for Warringah Council.  
P & J Smith Ecological Consultants (2003). Warringah Natural Area Survey: Vegetation Communities and Plant Species. Unpublished report for Warringah Council.

# Jamieson Park Fire Regime Management Plan